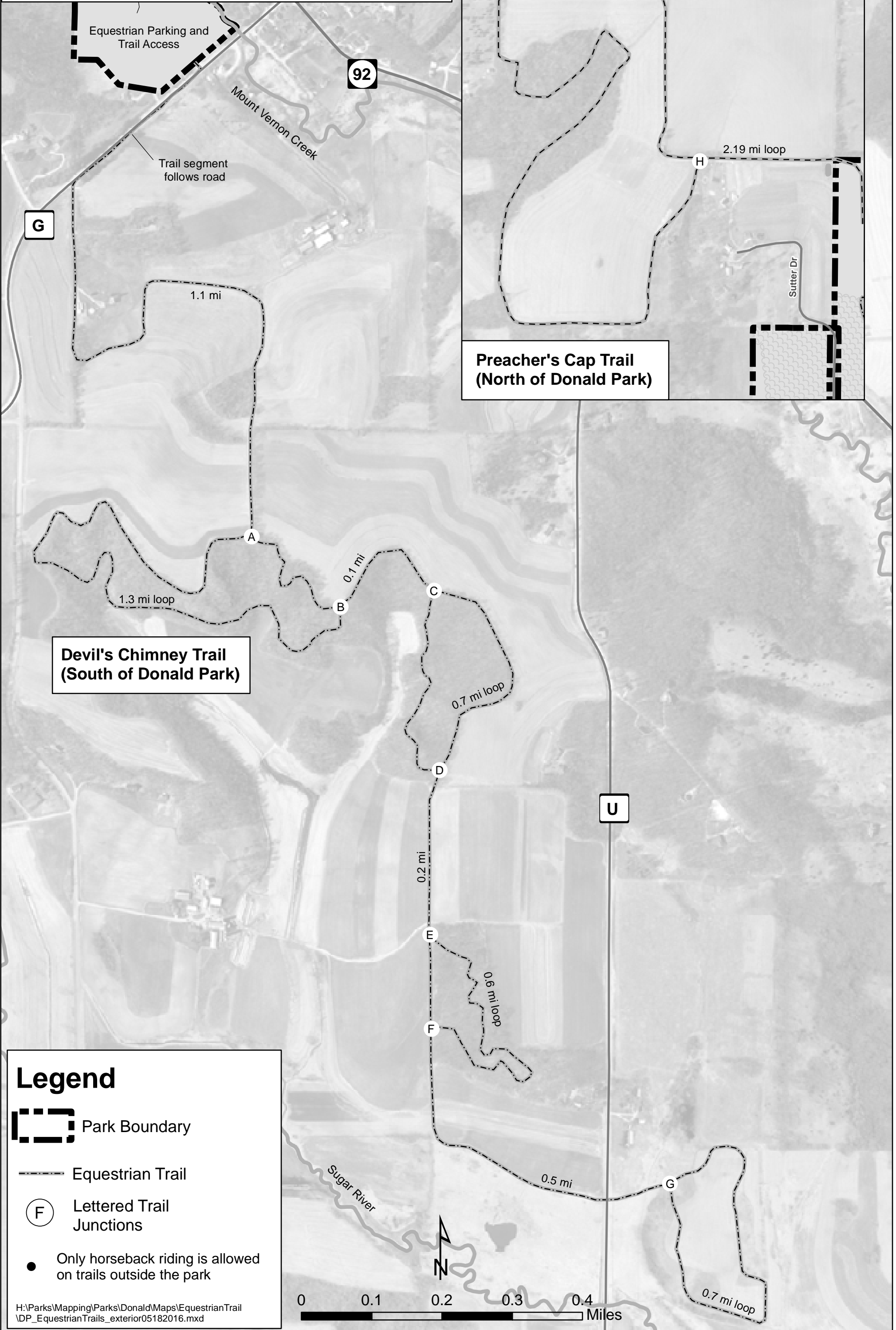


Donald County Park

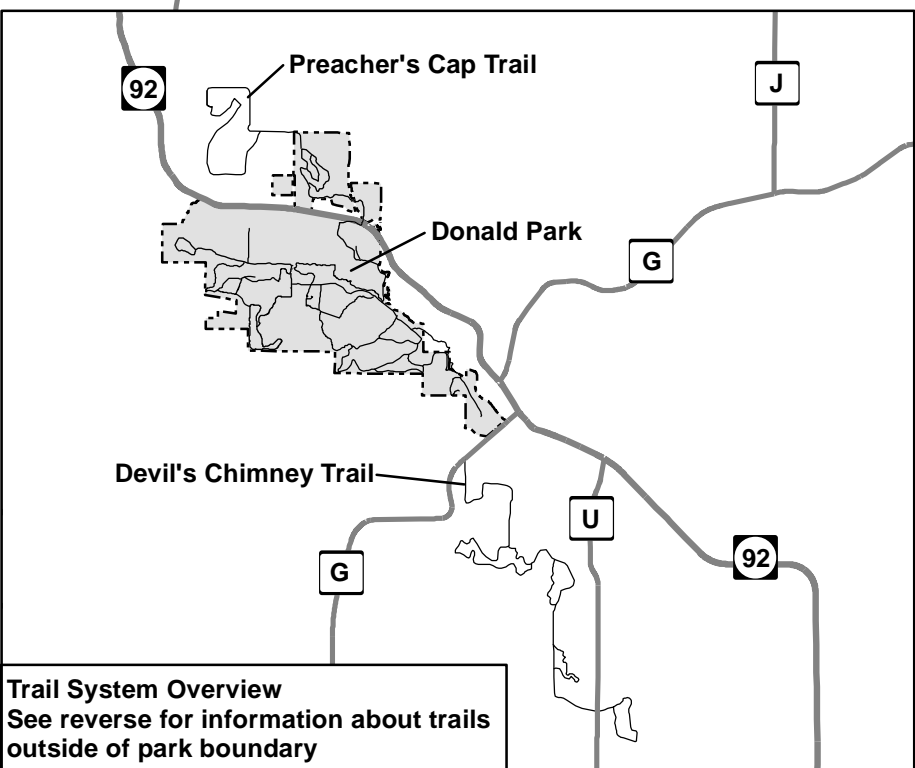
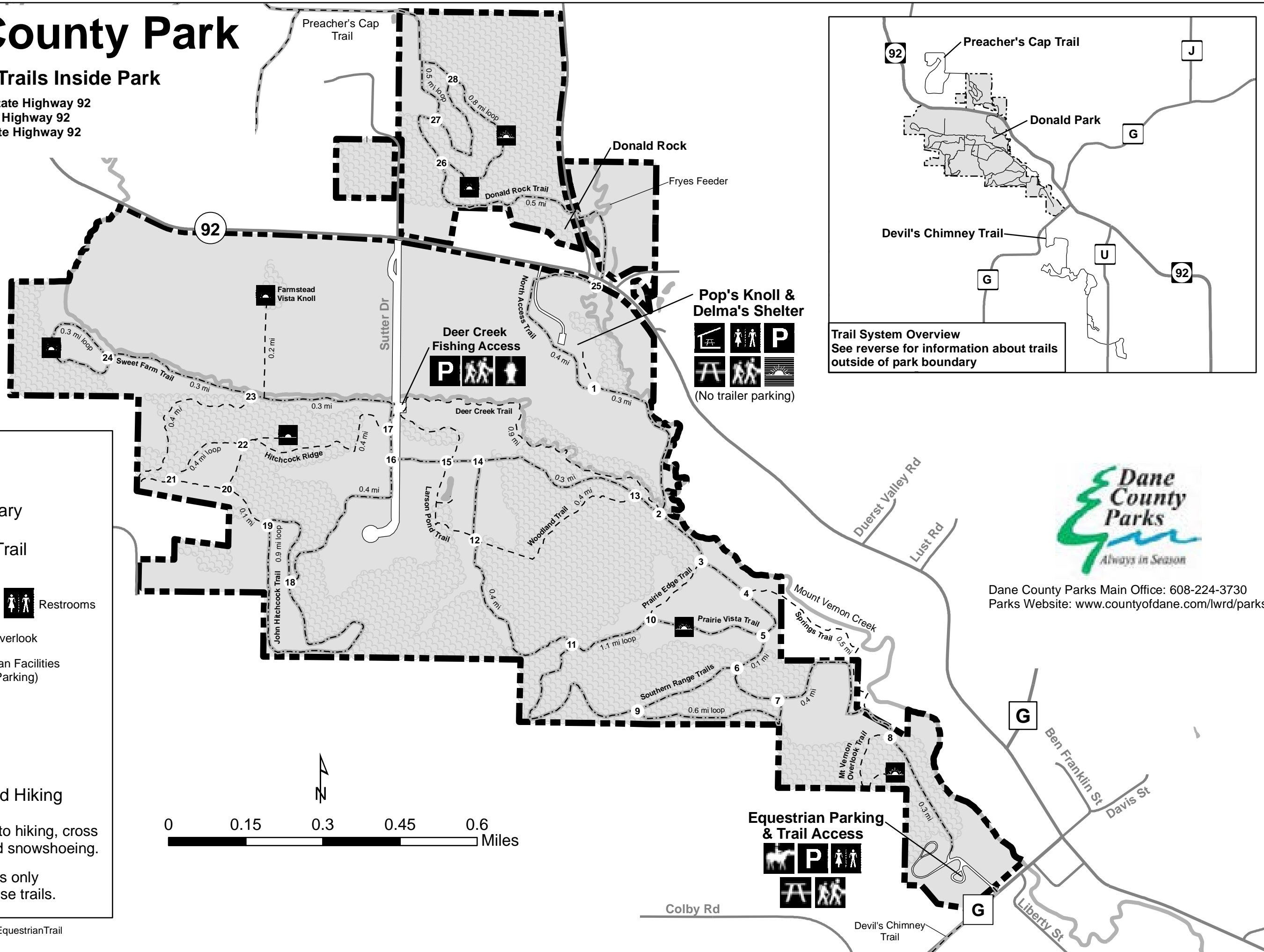
Equestrian Trails - Trails Outside of Park



Donald County Park

Equestrian Trails - Trails Inside Park

Old Sutter Dr Entrance: 1965 State Highway 92
 Pop's Knoll Shelter: 1945 State Highway 92
 Equestrian Entrance: 1965 State Highway 92
 Mt. Horeb, WI 53572



Trail System Overview
 See reverse for information about trails
 outside of park boundary

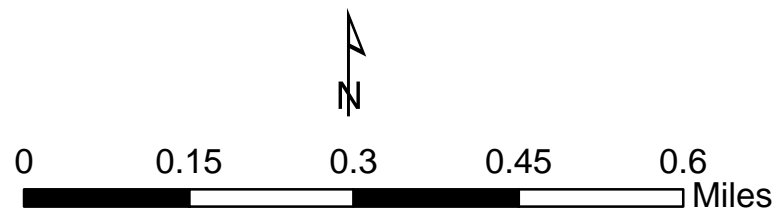
Legend

- Park Boundary
- Numbered Trail Junctions
- Parking
- Picnic Area
- Restrooms
- Fishing
- Scenic Overlook
- Shelter
- Equestrian Facilities (Trailer Parking)

Trails

- Hiking Trail
- Multi-use Trail
Equestrian and Hiking

- All trails are open to hiking, cross country skiing, and snowshoeing.
- Horseback riding is only allowed on multi-use trails.



Dane County Parks Main Office: 608-224-3730
 Parks Website: www.countyofdane.com/lwrp/parks